

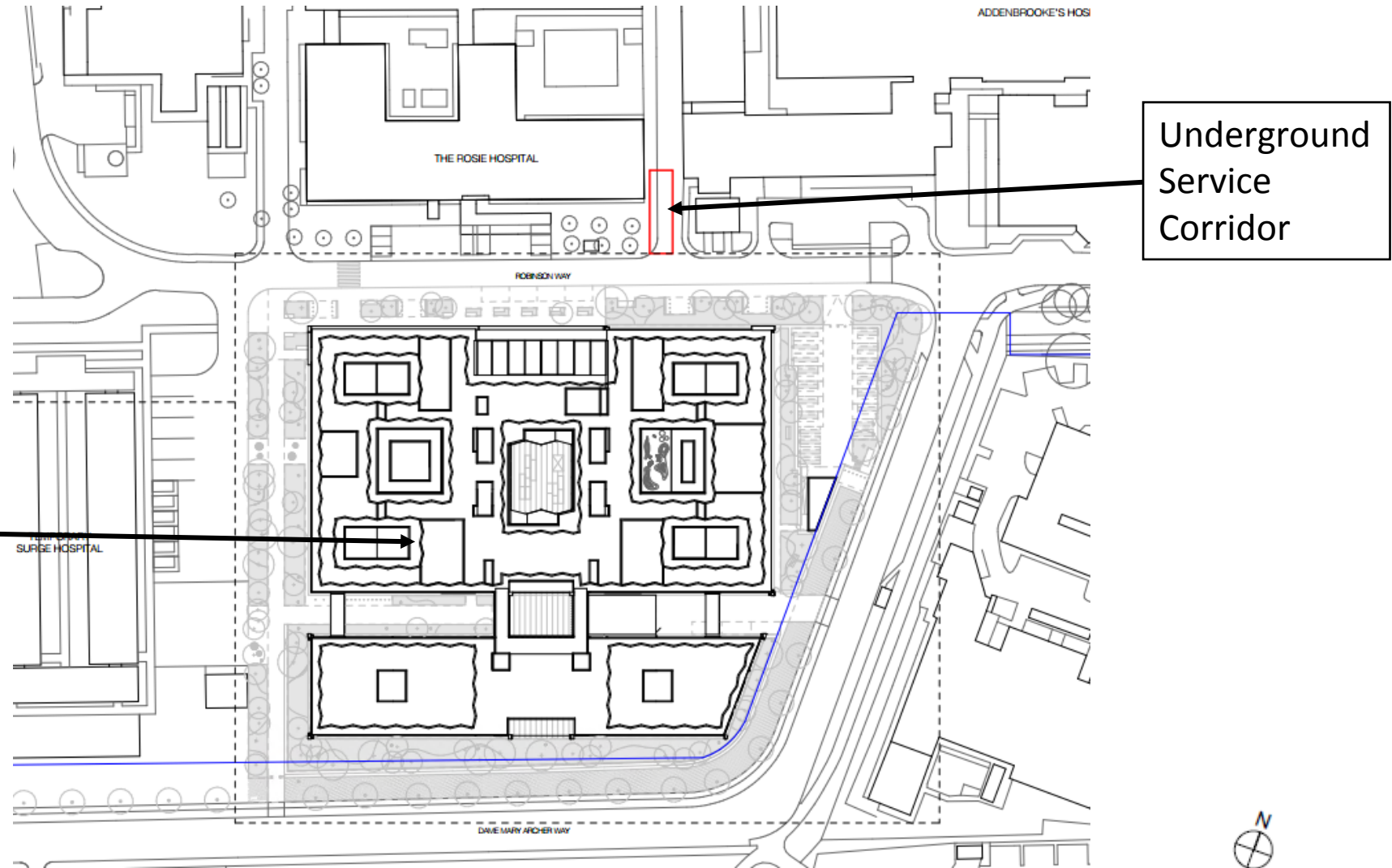
21/04337/FUL

Underground Service Corridor to serve the proposed new Cambridge
Children's Hospital, Cambridge Biomedical Campus
Plans Pack

Proposed development

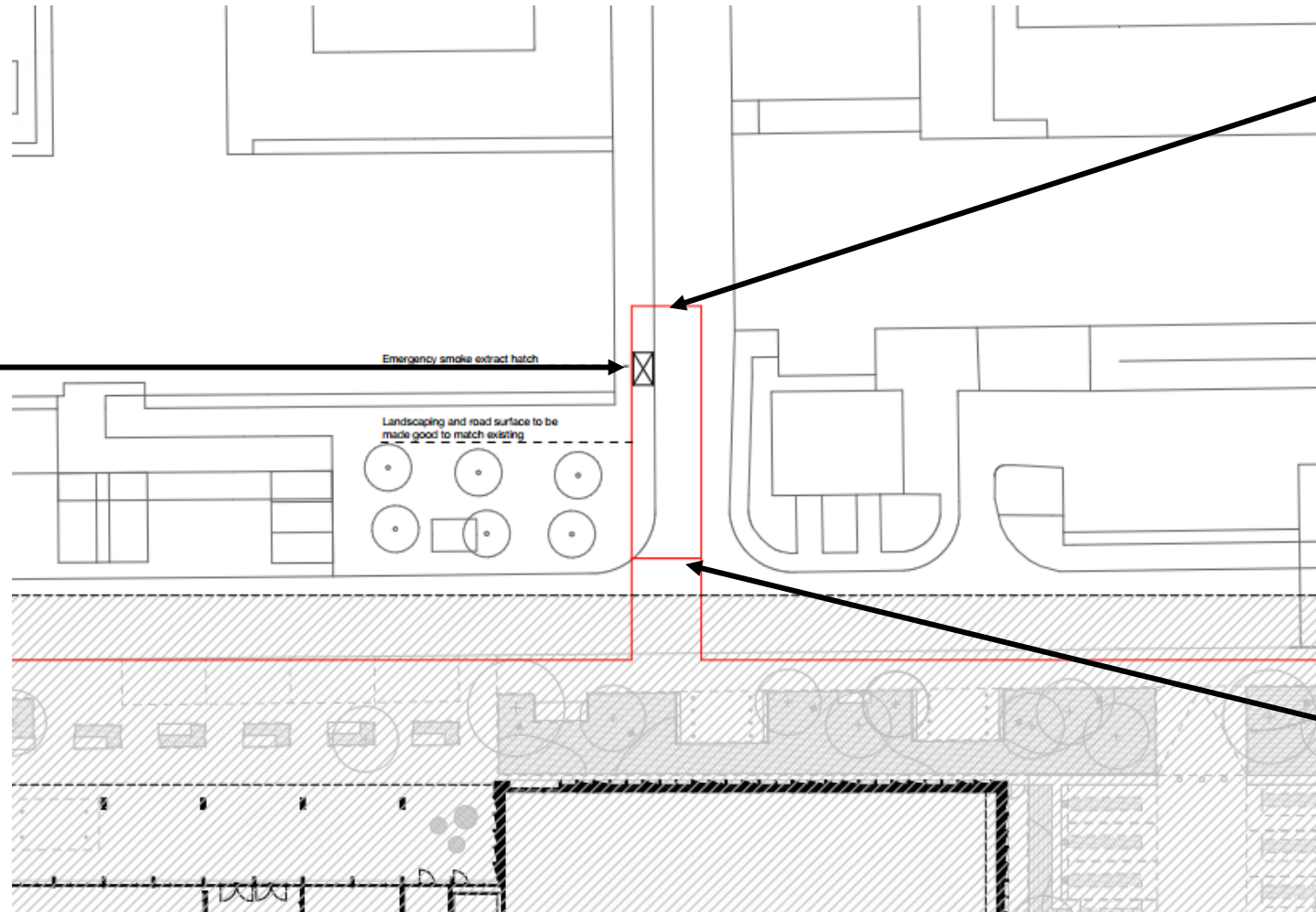
- The application is for an Underground Service Corridor to serve the proposed new Cambridge Children's Hospital (21/04336/REM) and connect to the existing underground service network.
- The proposal includes flood mitigation measures.

Location Plan



Site Plan

Emergency
Smoke
Extraction
Hatch

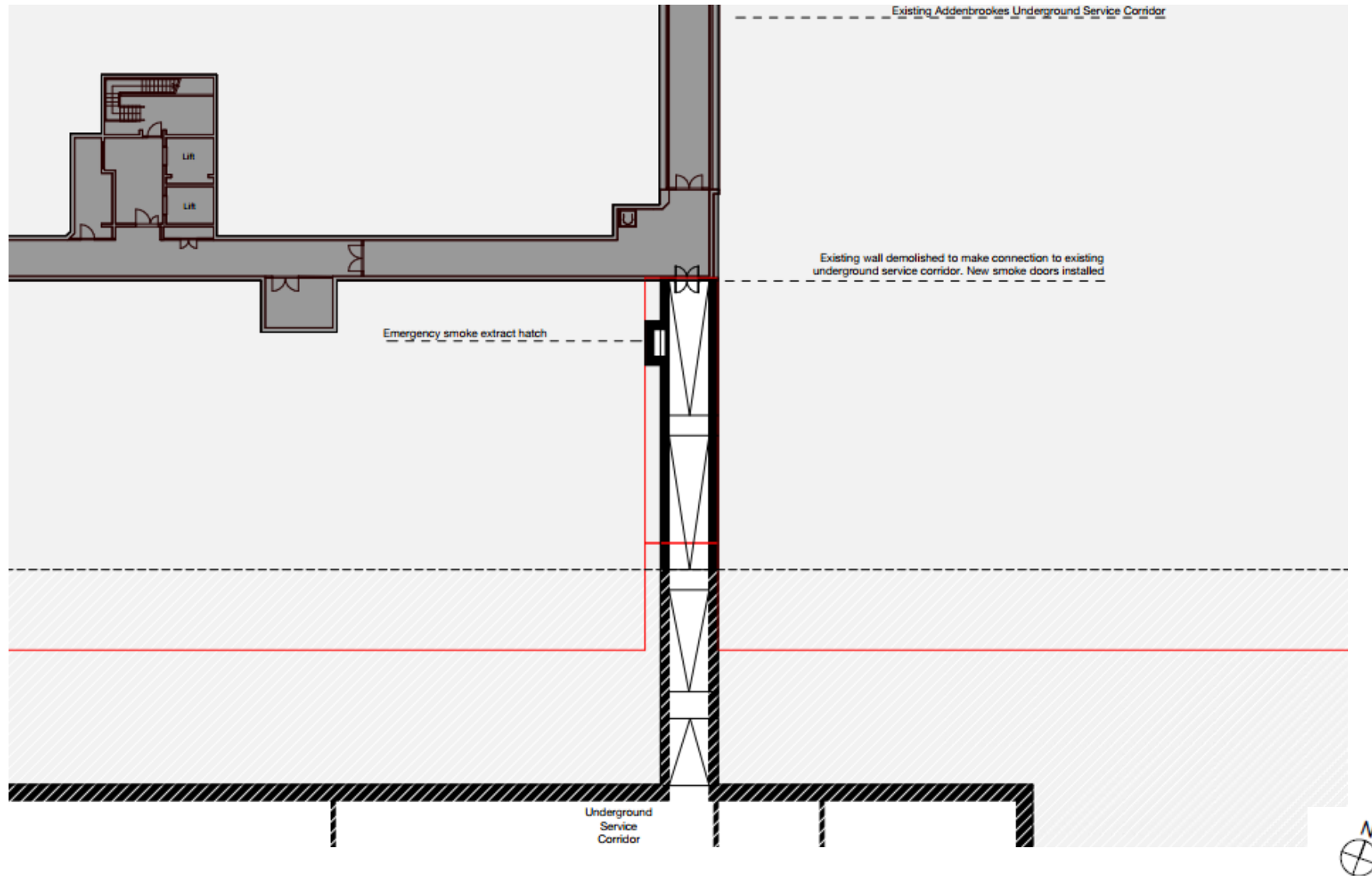


Link to
existing
underground
service
corridor

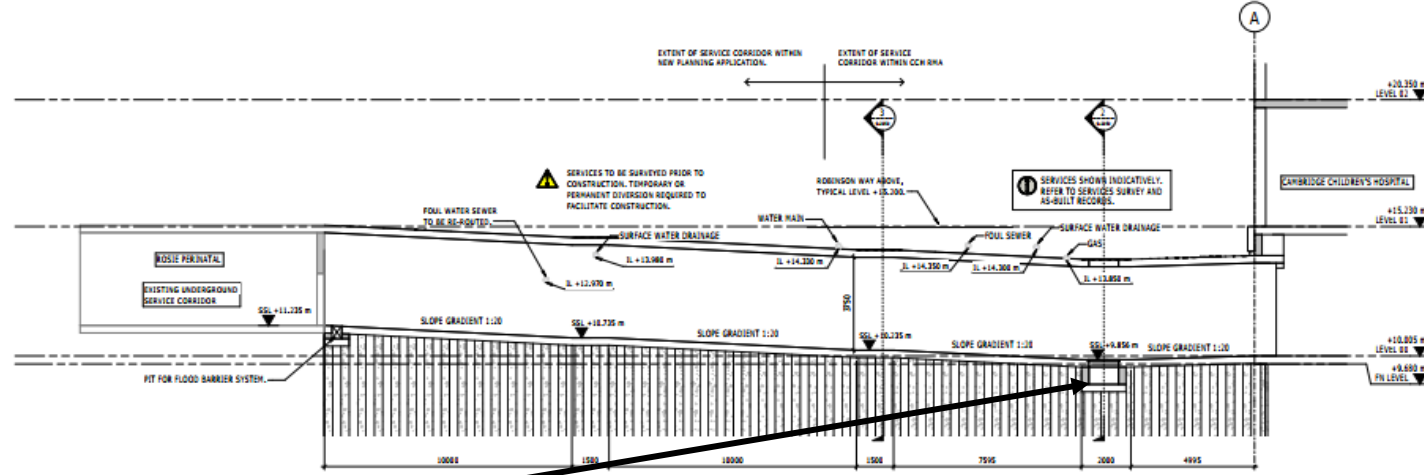
Link to
proposed
Cambridge
Children's
Hospital



Basement Floor Plan

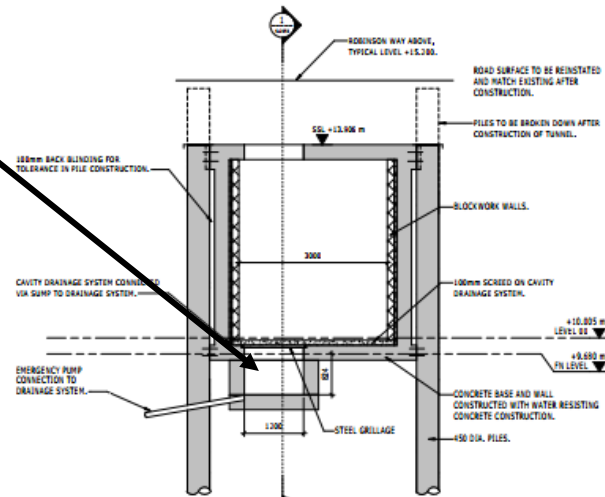


Cross Sections

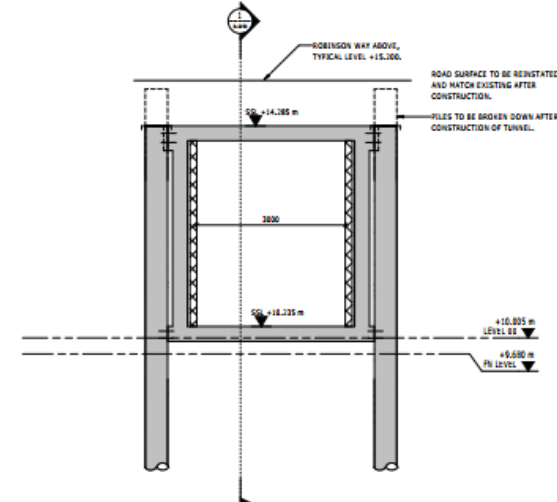


SECTION 1
1:10
5-0704
UNDERGROUND SERVICE CORRIDOR - SECTION 1

Emergency Water Collection point and connection to drainage system



SECTION 2
1:10
5-0704
UNDERGROUND SERVICE CORRIDOR - SECTION 2



SECTION 3
1:10
5-0856
UNDERGROUND SERVICE CORRIDOR - SECTION 3